






**522/2D Charles Street CANTERBURY NSW**

**2  2  1 **

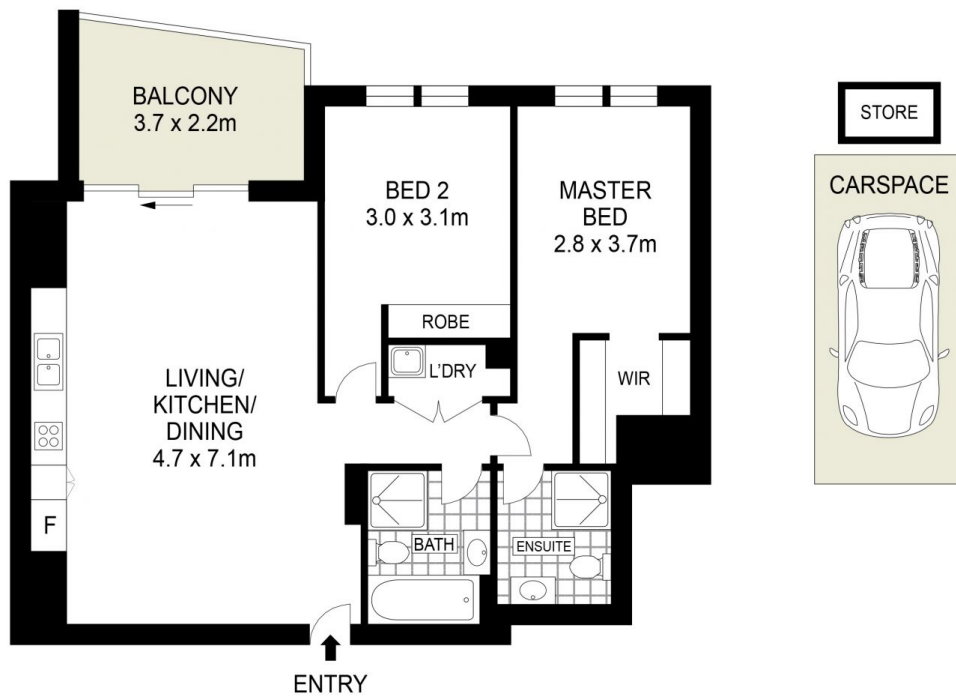
This apartment's location is in the heart of Canterbury CBD with major supermarkets, cafes, a train station and the Cooks River all just steps from your front door.

**Building Size** : 9 sqm  
**View** : <https://www.visionasset.com.au/sale/nsw/canterburybankstown/canterbury/residential/apartment/8102665>

Features include:

- 1min walking distance from Canterbury Station
- Bright open-plan living/dining area
- air conditioning
- High-end gas kitchen with stainless steel appliances including dishwasher
- Master bedroom with built-in robe and large modern ensuite
- Built-in robe to second bedroom; main bathroom with shower over bath
- Internal laundry
- Secure parking for one car plus basement storage

<https://www.visionasset.com.au>



## 522/2D Charles Street, Canterbury



Scale in metres. Indicative only. Dimensions are approximate. All information contained herein is gathered from sources we believe to be reliable. However, we cannot guarantee its accuracy and interested persons should rely on their own enquiries.