



## 8 Towell Way Kellyville NSW

5 3 2

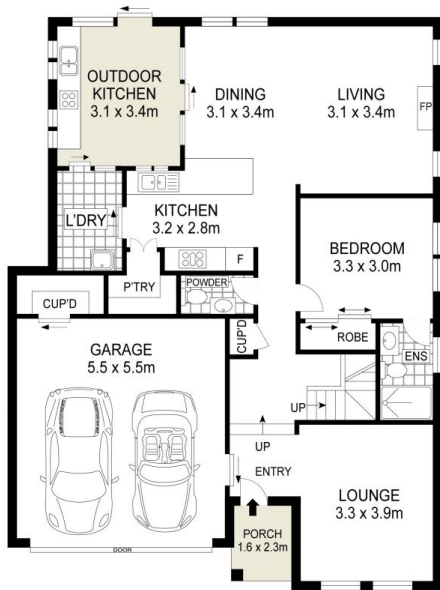
Located in one of the most convenient locations in Kellyville!

- Open plan living and dining, seamlessly opening up to the undercover alfresco area with kitchen
- Generous master bedroom featuring a private balcony, spacious walk-in wardrobe.
- Chef kitchen conveniently located off the dining area, featuring 40mm stone bench top, stainless steel 'SMEG' appliances and a walking pantry.
- Ground level master bedroom & laundry with external access
- Double automatic garage with internal access
- Alarm Security system, water tank & Ducted Air conditioning throughout

**Type** : House  
**Building Size** : 265 sqm  
**Land Size** : 303 sqm  
**View** : <https://www.visionasset.com.au/sale/nsw/hills/kellyville/residential/house/8128220>

[For full version visit the website](https://www.visionasset.com.au)

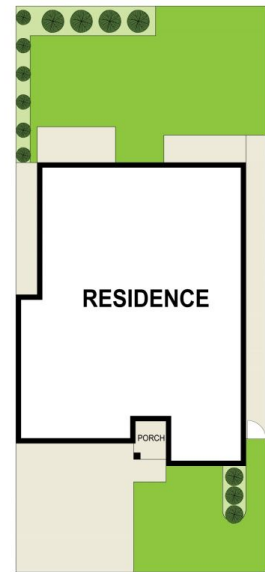
<https://www.visionasset.com.au>



GROUND FLOOR



FIRST FLOOR



SITE PLAN

## ● Towell Way, Kellyville



Scale in metres. Indicative only. Dimensions are approximate. All information contained herein is gathered from sources we believe to be reliable. However, we cannot guarantee its accuracy and interested persons should rely on their own enquiries.